



## AKL-LED-DTR78 SERIES

### Features

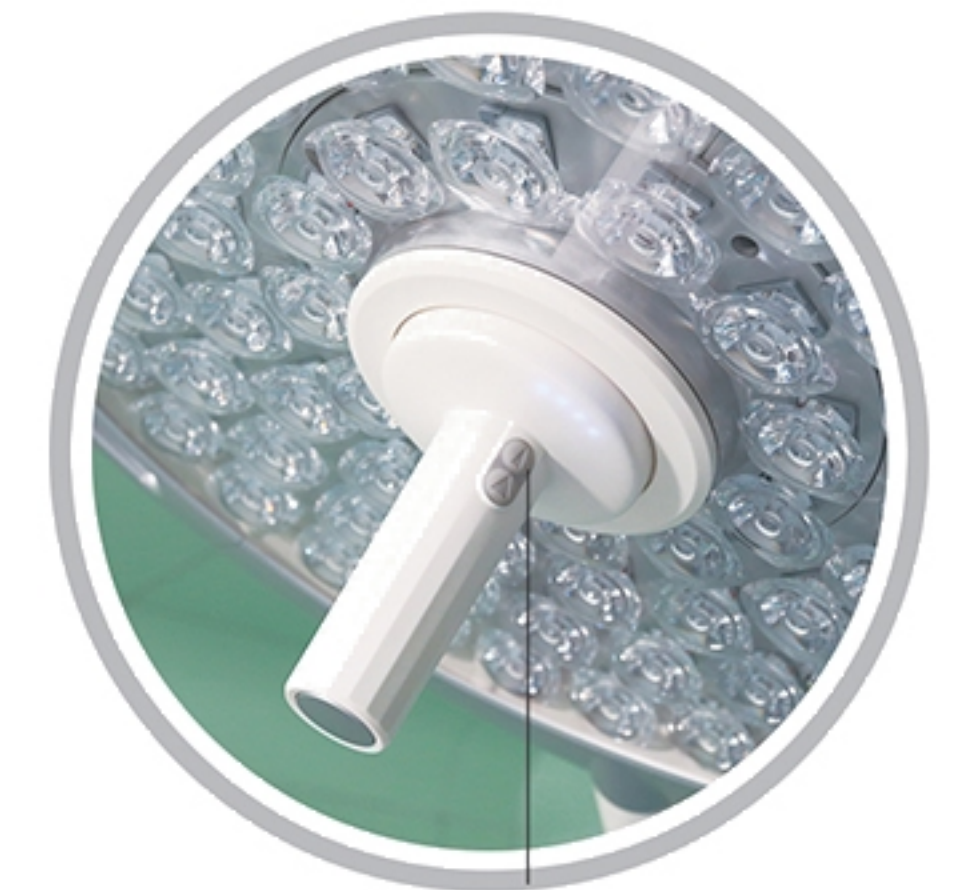
- Adopt imported LED cold light source.
- Nano coating of heat sink has created an excellent heat dissipation effect.
- Intelligent touch screen , flip back and forth .
- Removable handle cover , to facilitating cleaning and sanitation.
- Titanium alloy balance arm, no welding, never rust
- Import the spring arm to lift up and down, light and flexible, positioning lamp head accuracy .Adopt imported LED cold light source.
- Nano coating of heat sink has created an excellent heat dissipation effect.
- Intelligent touch screen , flip back and forth .
- Removable handle cover , to facilitating cleaning and sanitation.
- Titanium alloy balance arm, no welding, never rust
- Import the spring arm to lift up and down, light and flexible, positioning lamp head accuracy .
- Color temperature 3 steps adjustable.
- With R9(red) and R11 (green) auxiliary lighting function.
- With endoscopy surgery auxiliary lighting function.
- Light focus size adjusted electrical.
- With illumination automatic compensation function.



● AKL-LED · DTR78/ DTR78

## AKL-LED · DTR78 SERIES

AKL-LED-DTR78 series LED Operation shadowless lamp is suitable for various operation needs, is the modern ideal surgical lighting equipment operating room and purify the operating room.



Light focus size adjusted electrical



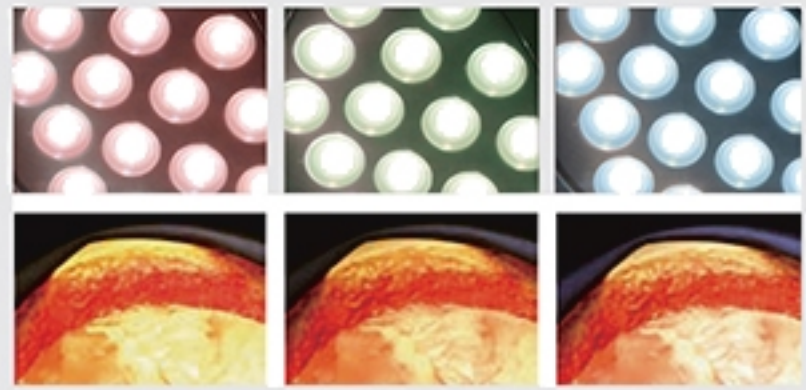
● AKL-LED · DTR78



Touch screen



## AKL-LED · DTR78 SERIES



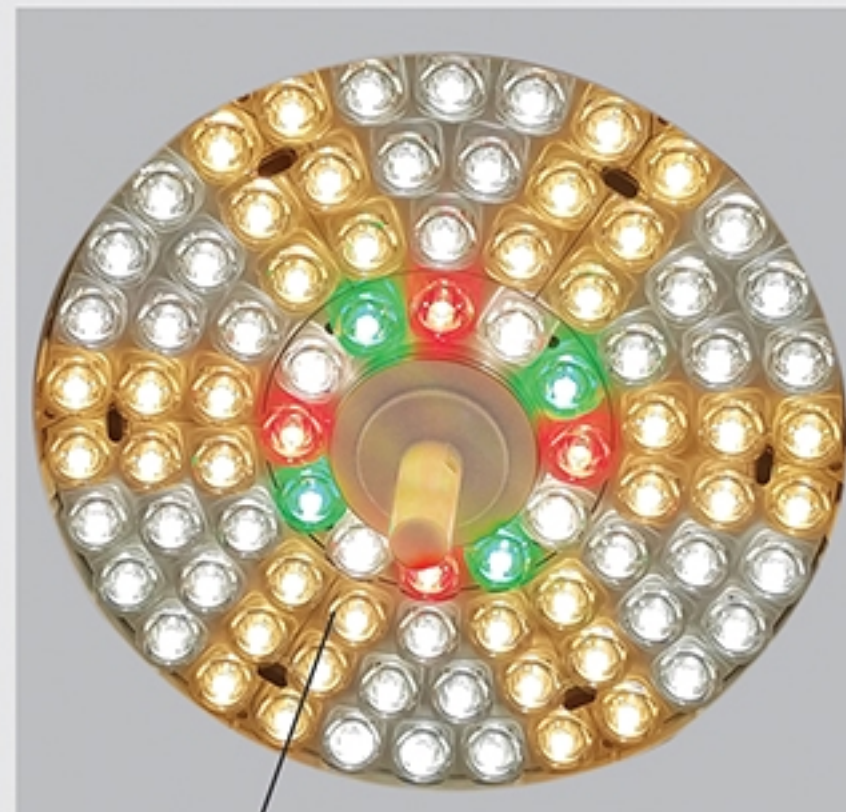
### Color temperature adjustable

You have the possibility to choose the optimum OR light as preferred or according to the tissue type and the wound field texture. This function can facilitate the clear distinction between various types of tissue and the perception of true tissue colours. Additionally, adjustable colour selection can help with concentration of errors due to fatigue.



**Illumination automatic compensation mode**  
With 6 imported sensing element provide Humanized intelligent illumination compensation technology.

**Endoscopy surgery lighting mode**



### R11 ( green ) mode

Suitable for neuro-surgery which request high CRI



### R9 Index - Portraying Red

A specific color rendering index for deep, saturated shades of red, critical to the surgical environment. Your eyes will see every detail in exposed tissue, in every subtle shade of red, with clarity, comfort and focus.



### Depth lighting

Special suspension lens provide great shadowless effect and depth lighting effect. Also with Anti-glare function



### High CRI

Ra > 97 R9 > 97 R11 > 97 R13 > 99 R15 > 98



## AKL-LED·D78 SERIES

### Features

- Adopt imported LED cold light source.
- Nano coating of heat sink has created an excellent heat dissipation effect.
- Intelligent touch screen , flip back and forth .
- Removable handle cover , to facilitating cleaning and sanitation.
- Titanium alloy balance arm, no welding, never rust
- Import the spring arm to lift up and down, light and flexible, positioning lamp head accuracy .
- Color temperature 3 steps adjustable.
- With R9(red) auxiliary lighting function.
- With endoscopy surgery auxiliary lighting function.





● AKL-LED • D78/ D78

## AKL-LED • D78 SERIES

AKL-LED • D78 series LED Operation shadowless lamp is suitable for various operation needs, is the modern ideal surgical lighting equipment operating room and purify the operating room.



● AKL-LED • D78

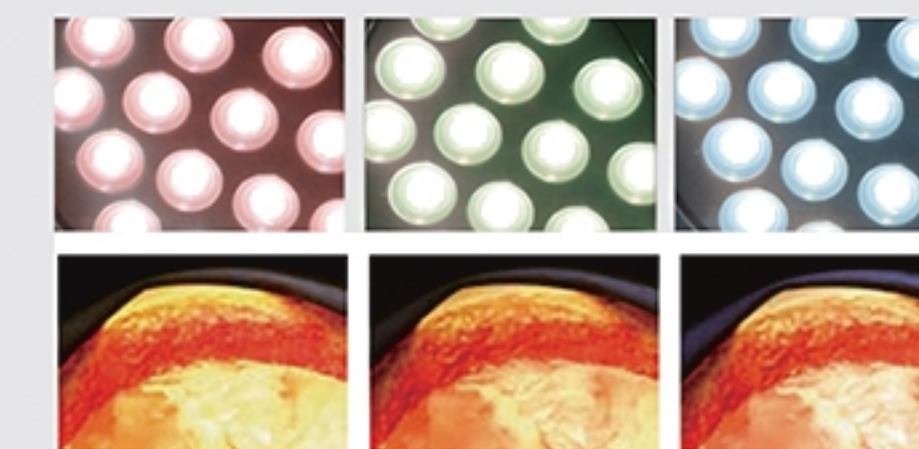


Touch screen

## AKL-LED • D78 SERIES



Endoscopy surgery lighting mode



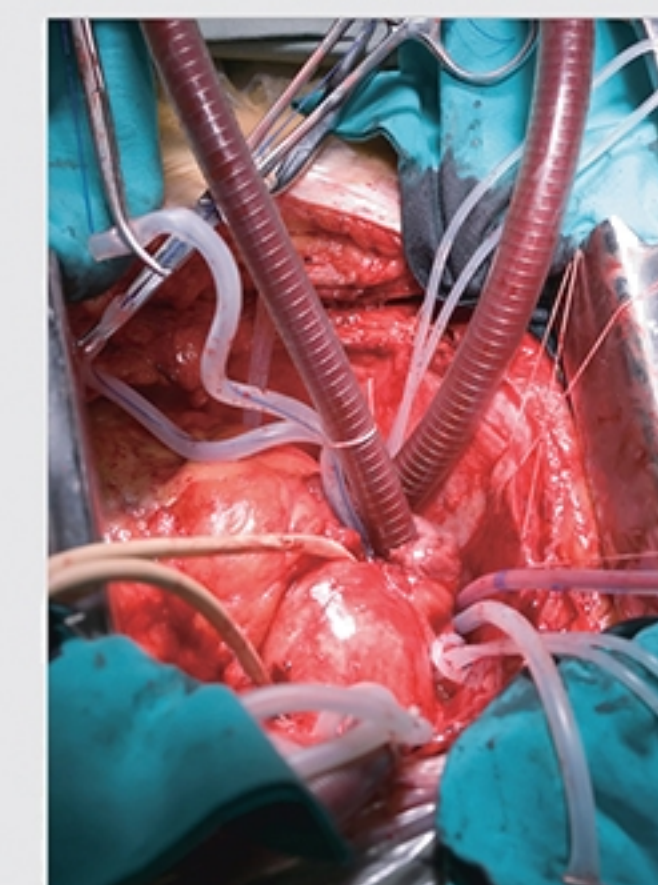
### Color temperature adjustable

You have the possibility to choose the optimum OR light as preferred or according to the tissue type and the wound field texture. This function can facilitate the clear distinction between various types of tissue and the perception of true tissue colours. Additionally, adjustable colour selection can help with concentration of errors due to fatigue.



### Depth lighting

Special suspension lens provide great shadowless effect and depth lighting effect. Also with Anti-glare function



### High CRI

Ra > 97  
R9 > 97  
R11 > 97  
R13 > 99  
R15 > 98





## OPERATING LAMP AKL – LED-MD61

The AKL-LED.MD61 operating lamp is suitable for the needs of various surgical situations, especially for the illumination of dental implant surgery, and the effect is very ideal.

### Features

- Use imported LED cold light source, ultra-thin optical lens.
- The LED brightness is controlled in a digital way.
- It has the function of adjusting spot diameter and color temperature.
- Removable handle coat, easy to clean and disinfect.
- Nano-coated heat sinks provide excellent heat dissipation.
- Spring arm is imported spring, flexible up and down.
- Accurate control of spectral band, UV and blue light filtering, effectively extend the curing time of dental restorative complex.

### Specification

MODE	AKL - LED-MD61
Lamp holder one meter illuminance lx	$\geq 80000$
Spot diameter	100-125
Lighting depth mm	$\geq 700$
Adjustable Angle of lamp holder	$\geq 240$
Color index Ra	$100 \geq Ra \geq 85$
Color temperature K(multi-adjustable)	$6700 \geq r Tc \geq 3000$
Total irradiance to illumination ratio mW/m squared lx	The $< 6$
Input power VA	$36 \pm 10\%$



## AKL – LED-D61



The control panel



Unique appearance



### Depth lighting

Special suspension lens provide great shadowless effect and depth lighting effect. Also with Anti-glare function



### Color temperature adjustable

You have the possibility to choose the optimum OR light as preferred or according to the tissue type and the wound field texture. This function can facilitate the clear distinction between various types of tissue and the perception of true tissue colours. Additionally, adjustable colour selection can help with concentration of errors due to fatigue.



## AKL-LED · STZ4 SERIES

AKL-LED.STZ4 series shadowless operation lamp are suitable for the requirements of various operation conditions and it is ideal operating lighting equipment for modern operation rooms and clean operation rooms.

### Features

- Imported LED cold light source is adopted , with the ultra-thin optical lens.
- Digital means are adopted for stepless regulation of LED brightness.
- Light field size can be adjusted by the handle.
- The removable handle sheath can be disinfected .
- The service life of LED shadowless lamp is long (50,000h).
- Color temp can be adjusted in three steps.
- The imported switch power supply is adopted to control the voltage, making the work voltage permanently stable.
- The no welding titanium alloy arm, Imported spring arm make sure the lamp head adjusted easily and freely.

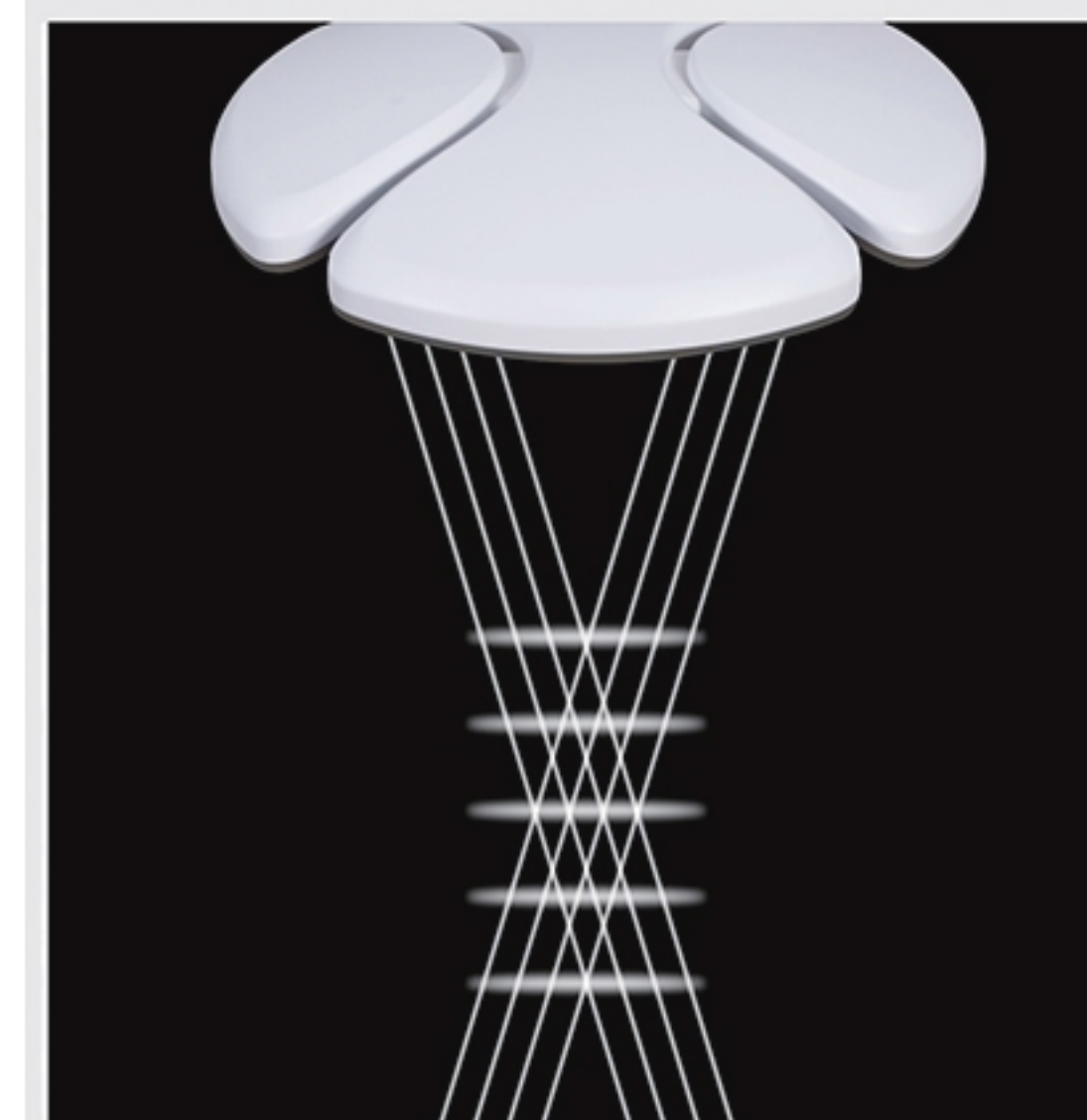


● AKL-LED · STZ4



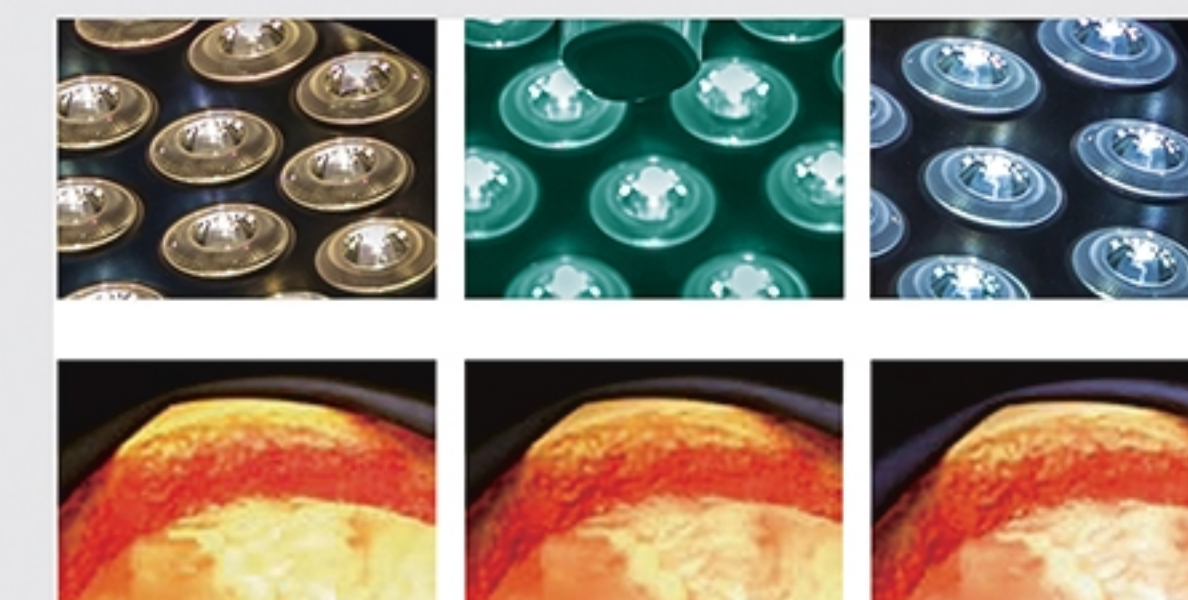
● AKL-LED · STZ4/ STZ4

## AKL-LED · STZ4 SERIES



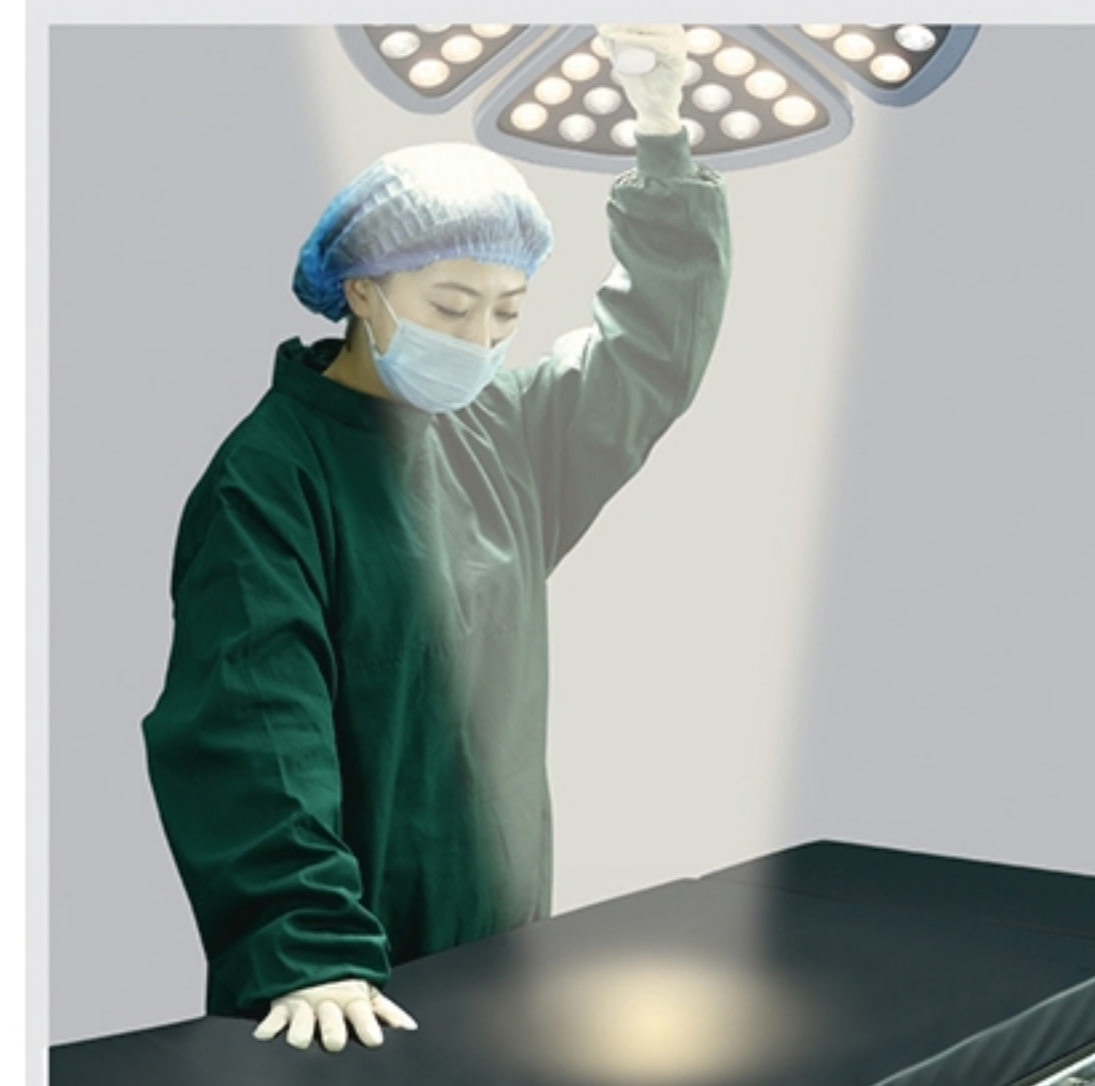
### Depth lighting

Focusing light can reach 1000mm



### Changing the Light Color

You have the possibility to choose the optimum OR light as preferred or according to the tissue type and the wound field texture. this function can facilitate the clear distinction between various types of tissue and the perception of true tissue colours. Additionally, adjustable colour selection can help with concentration of errors due to fatigue.



### Excellent Shadowless Capacity

The wellpro portioned LED bulbs deliver a 160,000 lux of pure, white light, a bright, consistent spot on surgical field regardless of obstruction.



"SMILE" design control panel, illumination, color temp can be adjusted



For light field diameter







● AKL-LED · SZ4/ SZ4

## AKL-LED · SZ4 SERIES

AKL-LED.SZ4 series shadowless operation lamp are suitable for the requirements of various operation conditions and it is ideal operating lighting equipment for modern operation rooms and clean operation rooms.

### Features

- Imported LED cold light source is adopted , with the ultrathin optical lens.
- Digital means are adopted for stepless regulation of LED brightness.
- Light field size can be adjusted by the handle.
- The removable handle sheath can be disinfected .
- The service life of LED shadowless lamp is long (50,000h).
- The imported switch power supply is adopted to control the voltage, making the work voltage permanently stable.
- The no welding titanium alloy arm, Imported spring arm make sure the lamp head adjusted easily and freely.



● AKL-LED · SZ4

## AKL-LED · SZ4



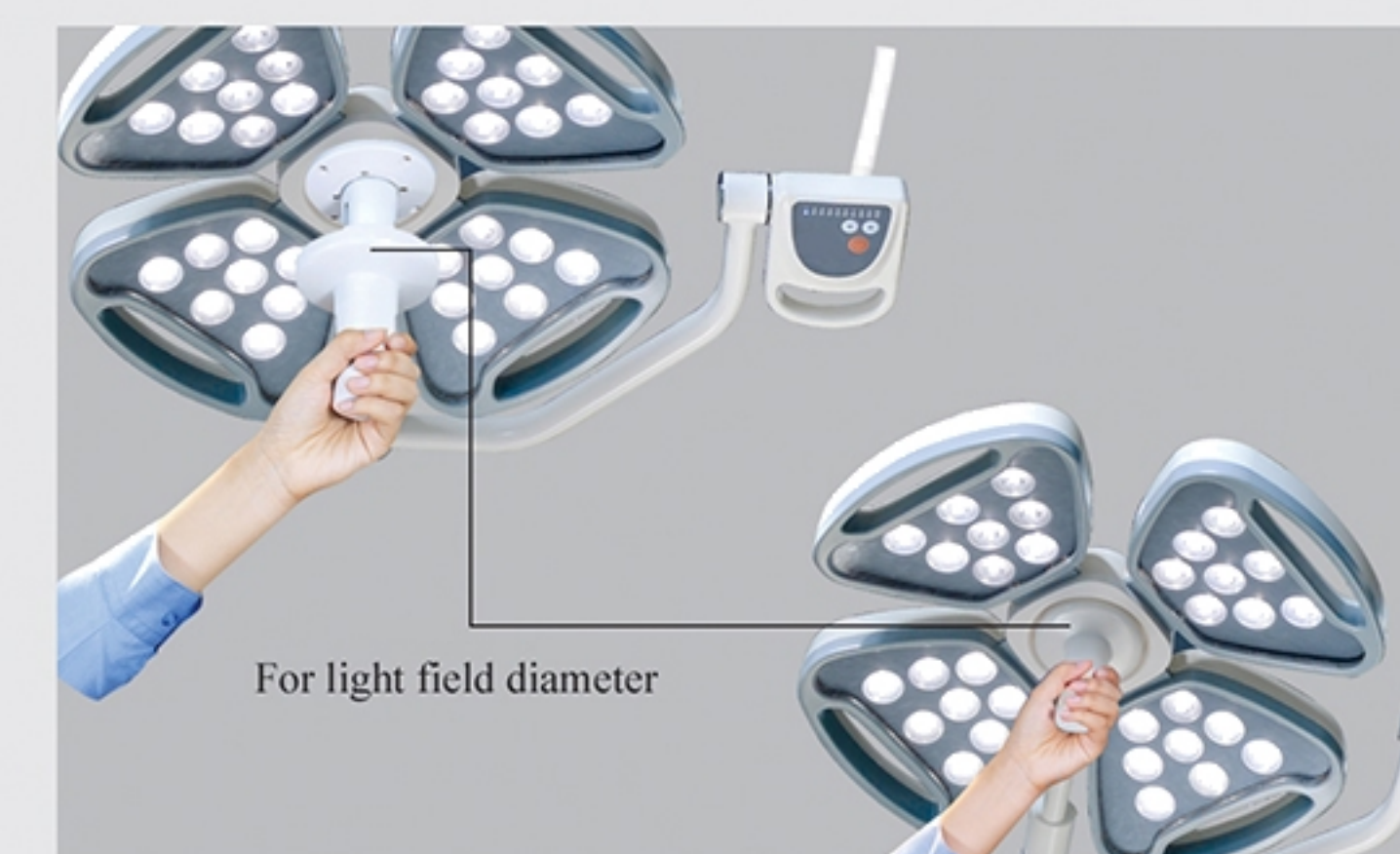
### Keeps You Cool&Wound Care

The LED cool light without infrared together with our Nano coating heat filter the exceptionally low heat dissipation ( $3.3\text{mW}/\text{m}^2\text{x}$ ) , which avoids the problem of heating the area around the surgeon's head, and pr- events desiccation of exposed tissue, and is good for the quickly recover of the wound.



### Excellent Shadowless Capacity

The well-proportioned LED bulbs deliver a 160,000 lux of pure, white light,a bright, consistent spot on surgical field regardless of obstruction.



For light field diameter



For light illumination  
Switch on/off



Operation lamp with digital HD carema system



AKL-LED.STZ4/STZ4 with camera system



AKL700/700-III with camera system

Optional Details:



Lamp head connected camera



Panorama carema



Recorading storage system

Features

MODE	1080P HD CAMERA	MODE	HD DVR
Image Sensor	1 / 2.8 "Cmos	Operating System	Embedded Linux Operating System
Signal System	Digital: 1080p	System Resources	Multi-channel real-time video, multi-channel
Resolution	2,380,000 pixels		real-time playback, USB backup
Aspect ratio	16: 9	Operating interface	Interface 16 true color graphical, mouse support
SNR	> 50dB	Image encoding standard	H.264
optical zoom	10x	video standard	1080P @ 30fps
Digital zoom	12x	playback image quality	1080P
Focal length f	f = 3.8 mm to38.0 mm	video input	HD-SDI
The minimum working distance of maximum aperture	0 mm (wide end) to 800 mm (tele end)	Video output	1 VGA, 1 HDMI,
Sensitive illumination color	F1.8 to F3.4	Grab function	Support JPEG capture function
Auto Focus	Yes	Recording mode	Manual recording, dynamic monitoring recording, timer recording
Image freeze	Yes	Recordings saved	local hard disk
Contrast enhancement	Yes	Communication	a standard 485 connector
white balance	Automatic and manual	USB	2 USB connector ports
Video signal output	HD (High Definition): HD-SDI	Internal hard drive	support two SATA hard disk interface
communication protocol	RS-485	Power supply	220V ± 10% 50Hz ± 2%
		Power	<15W (without hard drive)
		Operating temperature	0 ~ +55 °C



## AKL-LED · DTR78 SERIES

## Specifications

MODE	AKL-LED-DTR78/DTR78
Illumination at 1m(lux)	160000/160000
Illumination at 1m on Endo model(lux)	15000
Light field diameter D10 mm	180±40/180±40
D50 mm	110±35/110±35
Depth of illumination L1+L2 mm	150
Color rendering index(Ra)	100≥Ra≥85
Red color index R9	R9≥97
Optional color temperature(K)	6700K ≥Te≥3500k
Number of LEDs	84/84
Average bulb life (hours)	50000h
Heat-to-light ratio(mW/m <sup>2</sup> lx)	< 6
Power supply	110-240V
Input power(VA)	150W/150W
Ceiling height for installation(cm)	2.7-3.2m
R11	≥97
R13	≥99
R15	≥98

## AKL-LED · D78 SERIES

## Specifications

MODE	AKL-LED-D78
Illumination at 1m(lux)	160000/160000
Illumination at 1m on Endo model(lux)	15000
Light field diameter D10 mm	180±40/180±40
D50 mm	110±35/110±35
Depth of illumination L1+L2 mm	150
Color rendering index(Ra)	100≥Ra≥85
Red color index R9	R9≥97
Optional color temperature(K)	6700K ≥Te≥3500k
Number of LEDs	84/84
Average bulb life (hours)	50000h
Heat-to-light ratio(mW/m <sup>2</sup> lx)	< 6
Power supply	110-240V
Input power(VA)	150W/150W
Ceiling height for installation(cm)	2.7-3.2m
R13	≥99
R15	≥98

## AKL-LED · STZ4 SERIES、AKL-LED · SZ4 SERIES

## Specifications

MODE	AKL-LED-STZ4/STZ4	AKL-LED-SZ4/SZ4
Diameter of lighthouse(cm)	Combined type	Combined type
Illumination at 1m(lux)	80000-160000 / 80000-160000	40000-100000 / 40000-100000
Light field diameter at 1m (cm)	10-28	10-28
D10(mm)	180±40/180±40	180±40/180±40
Diameter of spot D50(mm)	110±35/110±35	110±35/110±35
L1+L2 Depth of illumination(cm)	150	150
Color rendering index(Ra)	100≥Ra≥85	100≥Ra≥85
Optional color temperature(K)	6700≥Te≥3000(K)	4500±500K
Number of LED bulbs	72/72	32/32
Average bulb life (hours)	50000	50000
Heat-to-light ratio(mW/m <sup>2</sup> lx)	< 6	< 6
Working distance(cm)	70-140	70-140
Power supply	100-240V 50/60HZ	100-240V 50/60HZ
Input power (VA)	180	120
Ceiling height for installation(cm)	270-320	270-320



AKL-LED · MSTZ4 SERIES

AKL-LED · MSTZ4,AKL-LED · MD61 shadowless operation lamp are suitable for the requirements of various operation conditions and it is ideal operating lighting equipment for modern operation rooms and clean operation rooms.

Features

- Imported LED cold light source is adopted , with the ultrathin optical lens.
- Digital means are adopted for stepless regulation of LED brightness.
- Light field size can be adjusted by the handle.
- Removable handle sheath can be disinfected .
- Service life of LED shadowless lamp is long (50,000h).
- Color temperature can be adjusted in three steps.
- Imported switch power supply is adopted to control the voltage, making the work voltage permanently stable.
- No welding titanium alloy arm,Imported spring arm make sure the lamp head adjusted easily and freely.

Specification

MODE	AKL-LED·MSTZ4
Diameter of lighthouse(cm)	Combined type
Lllumination at 1m(lux)	80000-160000
L ight field diameter at 1m (cm)	10-28
D10(mm)	180±40
Diameter of spot D50(mm)	110±35
Color rendering index(Ra)	100≥Ra≥85
Color temperature(K)	(3500-4500)±500
Number of LED bulbs	72
Average bulb life (hours)	50000
Heat-to-light ratio(mW/m <sup>2</sup> lx)	< 6
Working distance(cm)	70-140
Input power(VA)	90
Ceiling height for installation(cm)	270-320



● AKL-LED · MSTZ4



● AKL-LED · MSTZ4 (AC/DC)

AKL-LED · MSZ4 SERIES

AKL-LED · MSZ4 series shadowless operation lamp are suitable for the requirements of various operation conditions and it is ideal operating lighting equipment for modern operation rooms and clean operation rooms.

Features

- Imported LED cold light source is adopted , with the ultrathin optical lens.
- Digital means are adopted for stepless regulation of LED brightness.
- Light field size can be adjusted by the handle.
- Removable handle sheath can be disinfected .
- Service life of LED shadowless lamp is long (50,000h).
- Color temperature can be adjusted in three steps.
- Imported switch power supply is adopted to control the voltage, making the work voltage permanently stable.
- No welding titanium alloy arm,Imported spring arm make sure the lamp head adjusted easily and freely.

Specification

MODE	AKL-LED·MSZ4
Diameter of lighthouse(cm)	Combined type
Lllumination at 1m(lux)	40000-100000
L ight field diameter at 1m (cm)	10-28
D10(mm)	180±40
Diameter of spot D50(mm)	110±35
L1+L2 Depth of illumination(cm)	150
Color rendering index(Ra)	100≥Ra≥85
Color temperature(K)	4500±500
Number of LED bulbs	32
Average bulb life (hours)	50000
Heat-to-light ratio(mW/m <sup>2</sup> lx)	< 6
Working distance(cm)	70-140
Input power (VA)	60
Ceiling height for installation(cm)	270-320



● AKL-LED · MSZ4



● AKL-LED · MSZ4 (交直流)



AKL01L.II LED

AKL01L.IILED Suitable for ENT, urology, gynecology examination and outpatient surgery half auxiliary lighting.

Features

- An imported LED cold light source is adopted as operation lighting. As a genuine cold light source.
- The LED shadowless lamp is pure-DC power supplied, without any strobe or harmonic.
- The service life of LED shadowless lamp is long (50,000 h).
- LED has high luminous efficiency and it is impact-resistant and strong to resist crumbling,
- without mercury contamination. The light it sends contains no infra-red or ultraviolet radiation pollution.
- The unique design of the spring arm.

Specification

MODE	AKL01L.II LED
Illumination (lux)	≥60000
Color Temperature (k)	4500±500
Input power(VA)	20
CRI	100≥Ra≥85
Tilt left and right	160°
Tilt front and back	190°
Spring arm adjusted	≥600



● AKL01L.IILED



● AKL01L.II LED

● AKL01L.II LED ( AC/DC )



AKL01L.II LED(NEW)

AKL01L.IILED Suitable for ENT, urology, gynecology examination and outpatient surgery half auxiliary lighting.

Features

- An imported LED cold light source is adopted as operation lighting. As a genuine cold light source.
- The LED shadowless lamp is pure-DC power supplied, without any strobe or harmonic.
- The service life of LED shadowless lamp is long (50,000 h).
- LED has high luminous efficiency and it is impact-resistant and strong to resist crumbling, without mercury contamination. The light it sends contains no infra-red or ultraviolet radiation pollution.
- The unique design of the spring arm.

Specification

MODE	AKL01L.II LED
Illumination (lux)	≥80000
Color Temperature (k)	6700≥Tc≥350K adjustable
Input power(VA)	20
CRI	100≥Ra≥85
R9	≥95
Tilt left and right	160°
Tilt front and back	190°
Spring arm adjusted	≥600



● AKL01L.IILED(NEW)



● AKL01L.II LED(新)

● AKL01L.II LED 交直流 (新)



## AKL01L.II LED-I

This light is working for gynecology, obstetrics, gynecology, ENT examination and general surgical lighting.

### Features

- Imported LED cold light source is adopted as operation lighting. As a genuine cold light source.
- Streamline design, beautiful looking.
- The lamp can be flexibly regulated 180 degrees.
- battery working (optional).

### Specification

MODE	AKL01L.II LED-I
Illumination (lux)	≥30000
Color rendering index(Ra)	≥85%
Color Temperature (k)	4500±500
Left / right	180°
Front /back	180°
Height adjustment distance(mm)	≥400
Input power(VA)	20±10%



● AKL01L.II LED-I



● AKL01L.II LED-I ( AC/DC )



● AKL700/700-III

## AKL700、500 SERIES

AKL700、500 shadowless operation lamp is suitable for the requirements of various operation conditions and it is ideal operating lighting equipment for modern operation rooms and clean operation rooms.

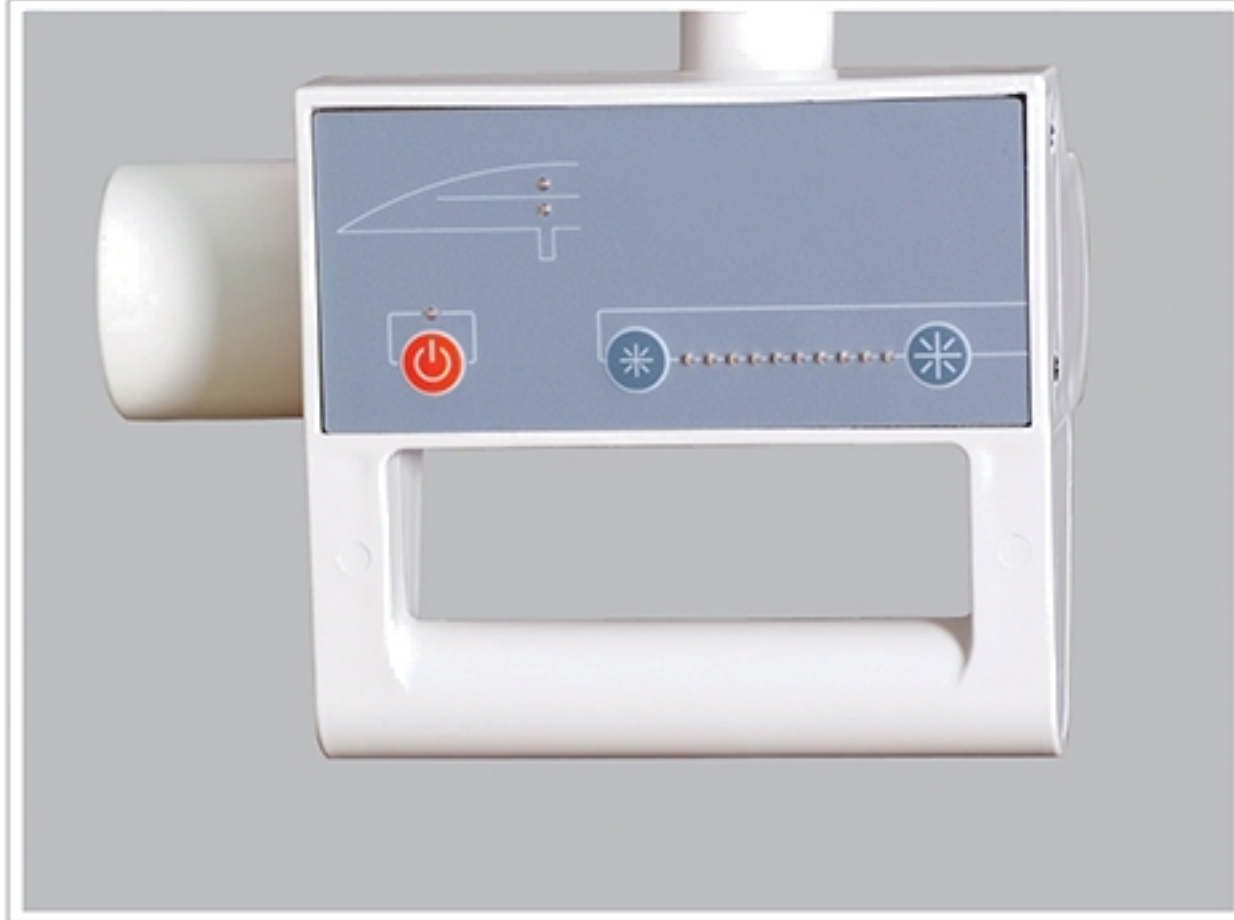
### Features

- The no welding titanium alloy main arm is adopted, so that the appearance is aesthetic and the rotation is more flexible and convenient.
- The removable handle sheath can be disinfected at the high temperature of 135℃.
- The depolished panel made of imported material makes the light rays softer.
- The imported switch power supply is adopted to control the voltage, making the work voltage permanently stable.
- The special radiation filter reducing the heat to the minimum level.
- The multi-flake retroreflector made of imported aluminum sheet has the features of no coating film and never fading.
- Imported lamp receptacle, Tungsten halogen bulbs of international brand are adopted with the average service more than 1500 hours.
- Light adjustment circuit adopts CPU control, enabling increase or decrease of illumination and boasting brightness memory.
- One lamp holder with two bulbs enables automatic operation of the standby bulb in 1/2 second when the main bulb malfunctions, and it has indicators for the damage of main or standby bulb.



● AKL700-III





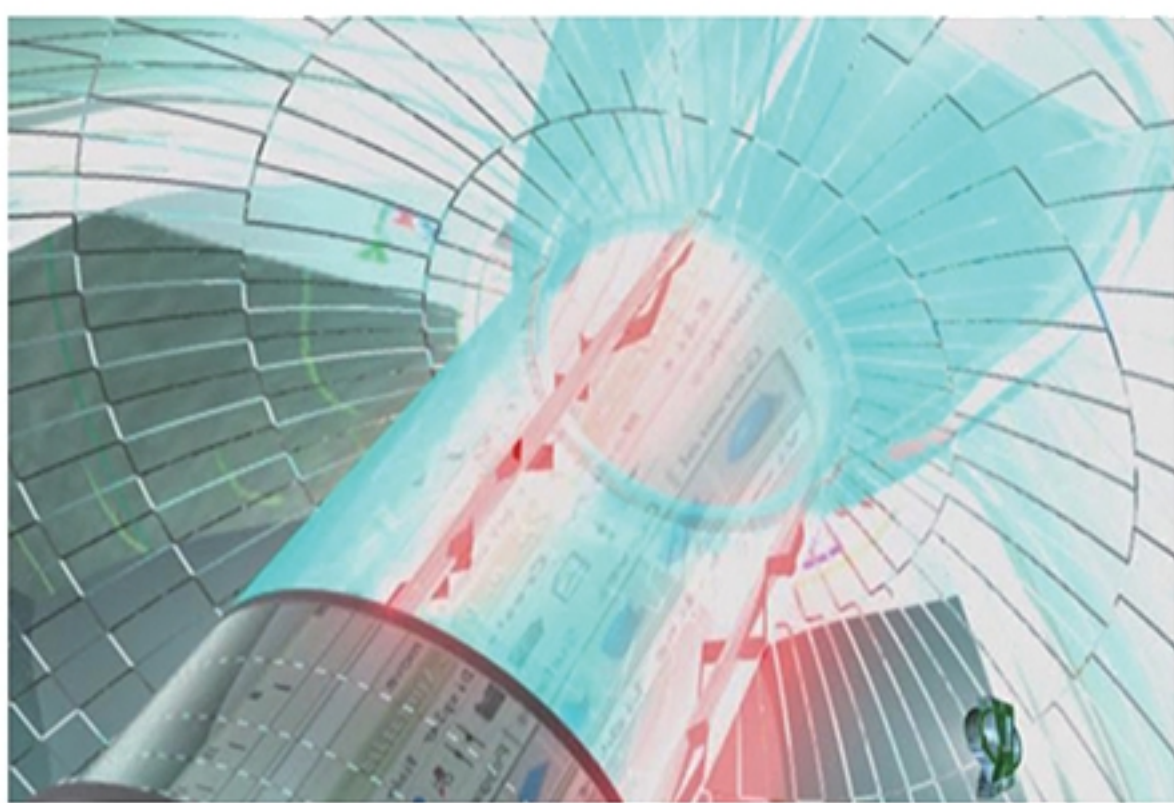
#### Perfect color temperature

Based on Trichromatic Theory, the light is closer to natural light, which is good for medical workers to distinguish the colors of vascular tissue, nerve endings and so on.



#### Illumination in depth

It adopts lamp bulb imported from Germany and provides the best beam depth, which is particularly important for deep operation with small-incision.



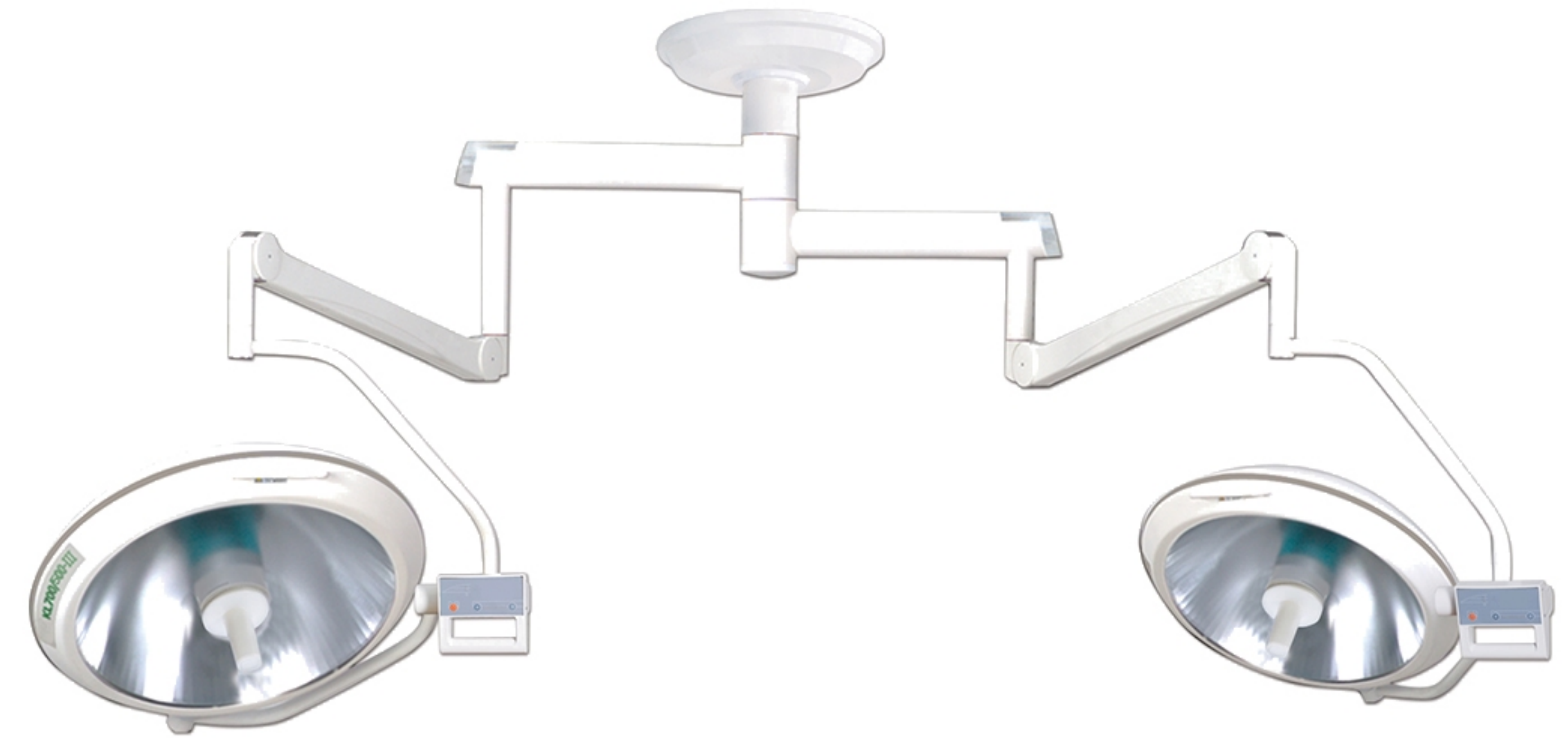
#### Conductive system

Conductive system adopts imported heat-resisting material, thus promising the working life of shadowless lamp.



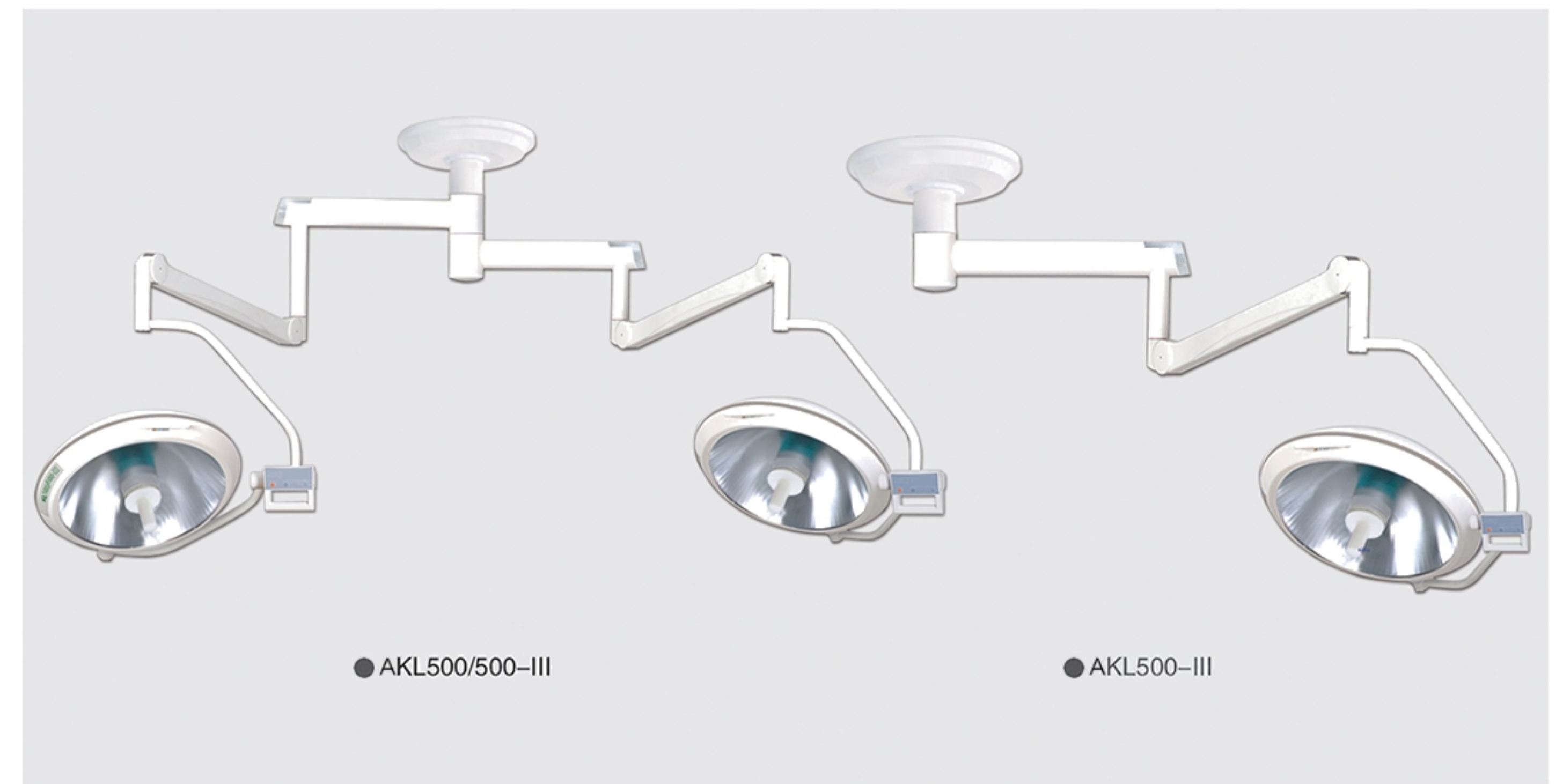
#### The function of filtering system

Adopting the US blue cold light coating technology, the optical filter could effectively filter ultraviolet rays from the spectrum.



● AKL700/500-III

## AKL700、500 SERIES



● AKL500/500-III

● AKL500-III



## AKL700-III、AKL700/700-III

### Features

MODE	AKL700-III	AKL700/700-III
Illumination (lux)	160000≥Ec≥80000	160000≥Ec≥80000 / 160000≥Ec≥80000
Color Temperature (K)	4500±500	4500±500
Color rendering index	100≥Ra≥85	100≥Ra≥85
Diameter of Spot (cm)	10-28	10-28
Depth of light beam (mm)	≥700	≥700
Brightness level adjustment	CPU light-dimmer	CPU light-dimmer
The value of the total irradiance (service range for temperature rise≤10℃)	< 6mW/m²lx	< 6mW/m²lx
Total irradiance ( Temperature rise on the head of patient under surgical operation≤2℃)	≤600W/m²	≤600W/m²
Diameter of lamp holder (mm)	700	700/700
Shift of major and stand by lamps	Automatic	Automatic
Bulb power W(24V)	150	150/150
Power supply (AC)	220±20% 50Hz	220±20% 50Hz
Input power (VA)	200+10%	400+10%
Minimum height for installation ( mm )	2700~3200	2800~3200

## AKL700/500-III、AKL500-III、AKL500/500-III

### Features

MODE	AKL700/500-III	AKL500-III	AKL500/500-III
Illumination (lux)	160000≥Ec≥80000 120000≥Ec≥60000	120000≥Ec≥60000	120000≥Ec≥60000 120000≥Ec≥60000
Color Temperature (K)	4500±500	4500±500	4500±500
Color rendering index	100≥Ra≥85	100≥Ra≥85	100≥Ra≥85
Diameter of Spot (cm)	10-28	10-28	10-28
Depth of light beam (mm)	≥700	≥700	≥700
Brightness level adjustment	CPU light-dimmer	CPU light-dimmer	CPU light-dimmer
The value of the total irradiance (service range for temperature rise≤10℃)	< 6mW/m²lx	< 6mW/m²lx	< 6mW/m²lx
Total irradiance ( Temperature rise on the head of patient under surgical operation≤2℃)	≤600W/m²	≤600W/m²	≤600W/m²
Diameter of lamp holder (mm)	700/500	500	500/500
Shift of major and stand by lamps	Automatic	Automatic	Automatic
Bulb power W(24V)	150/150	150	150/150
Power supply (AC)	220±20% 50Hz	220±20% 50Hz	220±20% 50Hz
Input power (VA)	400+10%	200+10%	400+10%
Minimum height for installation ( mm )	2800~3200	2700~3200	2800~3200





## Operation lamp with digital HD carema system



AKL-LED · DTR78/DTR78 with camera system

## DETAILS :



Panorama carema



Monitor with ceiling system

## AKL500 [MOBILE]

AKL500-III shadowless operation lamp is suitable for the requirements of various operation conditions and it is ideal operating lighting equipment for modern operation rooms and clean operation rooms.

### Features

- The imported switch power supply is adopted to control the voltage, making the work voltage permanently stable.
- The removable handle sheath can be disinfected at the high temperature of 135 °C.
- The special radiation filter reducing the heat to the minimum level.
- The depolished panel is made of imported material makes the light rays softer.
- The multi-flake retroreflector made of imported aluminum sheet, has the features of no coating film and never fading.
- Light adjustment circuit adopts CPU control, enabling increase or decrease of illumination and boasting brightness memory.
- One lamp holder with two bulbs enables automatic operation of the standby bulb in 1/2 second when the main bulb malfunctions, and it has indicators for the damage of main or standby bulb.
- Imported lamp receptacle, Tungsten halogen bulbs of international brand are adopted with the average service more than 1500 hours. AC/DC, may satisfy when the power failure continues the surgery. (AC/DC type)

### Specification

MODE	AKL500
Illumination (lux)	60000~120000
Color Temperature (K)	4500±500
Color rendering index (Ra)	100≥Ra≥85
Diameter of Spot (cm)	10-28
Depth of light beam (mm)	≥700



● AKL500-III (MOBILE)



● AKL500-III (MOBILE) [AC/DC]



## AKL01L SERIES

AKL01L Suitable for ENT, urology, gynecology examination and outpatient surgery half auxiliary lighting.

### Note

- AKL01L.IP use shadonless bulbs
- AKL01L.IL use halogen bulbs
- AKL01L.IIL with battery



● AKL01L.IIL [AC/DC]



● AKL01L.IL



● AKL01L.IP

## AKL04L SERIES

AKL04L For general outpatient surgical lighting, with brake can be easy moved. KL04L.I with battery is more suitable for cutting off power.



● AKL04L.I



● AKL04L.III



## AKL05L SERIES

AKL05 is more suitable for small operating room,AKL05L.III with brake can be easy moved,AKL05L.I with battery is more suitable for cutting off power.



● AKL05L.I



● AKL05L



● AKL05L.III

## AKL05L SERIES(LED)

AKL05 LED is more suitable for small operating room.



● AKL05L.I



● AKL05L.III





● AKL1205L

## AKL09L、AKL12L、AKL1205L

AKL09L AKL12L AKL1205L use of multiple different sources, by focusing knob, so the beam is irradiated from different locations surgery, reduce the shadow medical staff head, hands and other parts caused. The illumination can be adjusted according to actual needs.



● AKL09L

● AKL12L

● AKL12L LED

## AKL01L

### Specification

MODE	AKL01L·IP	AKL01L·IL、AKL01L·IIL AC/DC
Illumination (lux)	≥12000	≥20000
Color Temperature (K)	3500±500	3500±500
Power supply (AC)	220V±10% 50Hz	220V±10% 50Hz
Rated voltage of bulb	24V	24V
Rated power of bulb	25W	50W
Input power (VA)	30	60
Note	Cold light source	Tungsten halogen bulb

## AKL04L、AKL05L

### Specification

MODE	AKL04L·I AC/DC	AKL04L·III	AKL05L、AKL05L·I、AKL05L·III
Illumination (lux)	40000	40000	50000
Color Temperature (K)	4000±500	4000±500	4000±500
Color rendering index	100≥Ra≥85	100≥Ra≥85	100≥Ra≥85
Depth of light beam (mm)	-	≥500	≥500
The value of the total irradiance(service range for temperature rise≤10℃)	< 6mW/m²lx	< 6mW/m²lx	< 6mW/m²lx
Total irradiance ( Temperature rise on the head of patient under surgical operation≤2℃)	≤600W/m²	≤600W/m²	≤600W/m²
Power supply(AC)	220V±10% 50Hz DC24V	220V±10% 50Hz DC24V	220V±10% 50Hz
Rated voltage of bulb	24V	24V	24V
Rated power of bulb	100W	100W	125W
Input power(VA)	180	120	150

## AKL09L、AKL12L、AKL1205L

### Specification

MODE	AKL09L	AKL12L	AKL1205L
Illumination of Main lamp (lux)	90000	120000	160000
Color Temperature (K)	4000±500	4000±500	4000±500
Color rendering index	100≥Ra≥85	100≥Ra≥85	100≥Ra≥85
Depth of light beam (mm)	≥500	≥500	≥500
The value of the total irradiance(service range for temperature rise≤10℃)	< 6mW/m²lx	< 6mW/m²lx	< 6mW/m²lx
Total irradiance ( Temperature rise on the head of patient under surgical operation≤2℃)	≤600W/m²	≤600W/m²	≤600W/m²
Power supply(AC)	220V±10% 50Hz	220V±10% 50Hz	220V±10% 50Hz
Rated voltage of bulb	24V	24V	24V
Rated power of bulb	225W	300W	425W
Input power(VA)	280	350	500